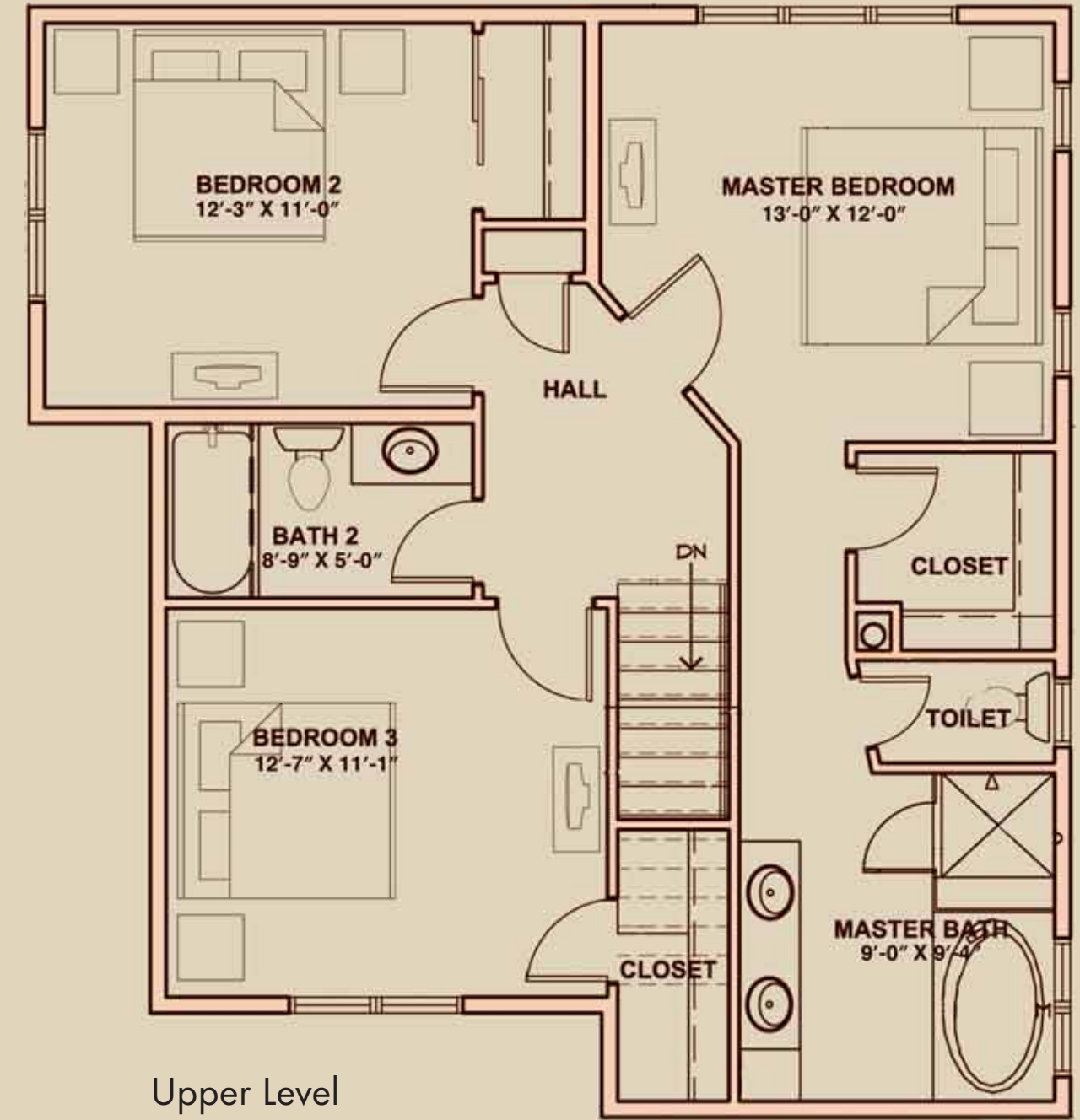
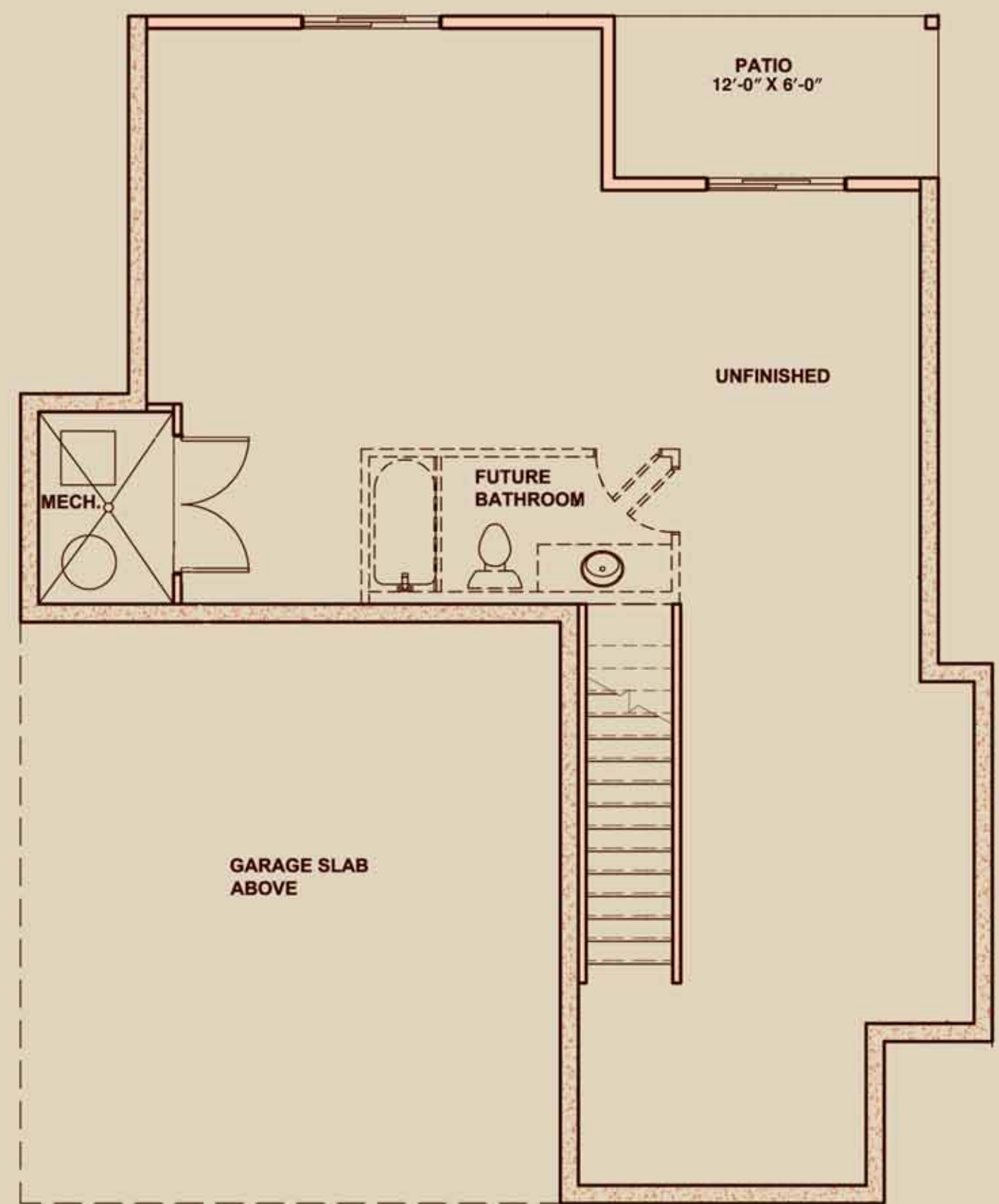


Main Level



Upper Level



Lower Level (optional)

BRIHOU

14 Homes Available - (SF-2B)

Single Family: 3 bedroom / 2.5 bath

Lower 953 sq. ft. unfinished (optional)

Main 942 sq. ft. finished

441 sq. ft. garage

Upper 829 sq. ft. finished

Total: 3165 sq.ft. / 1771 finished sq.ft.