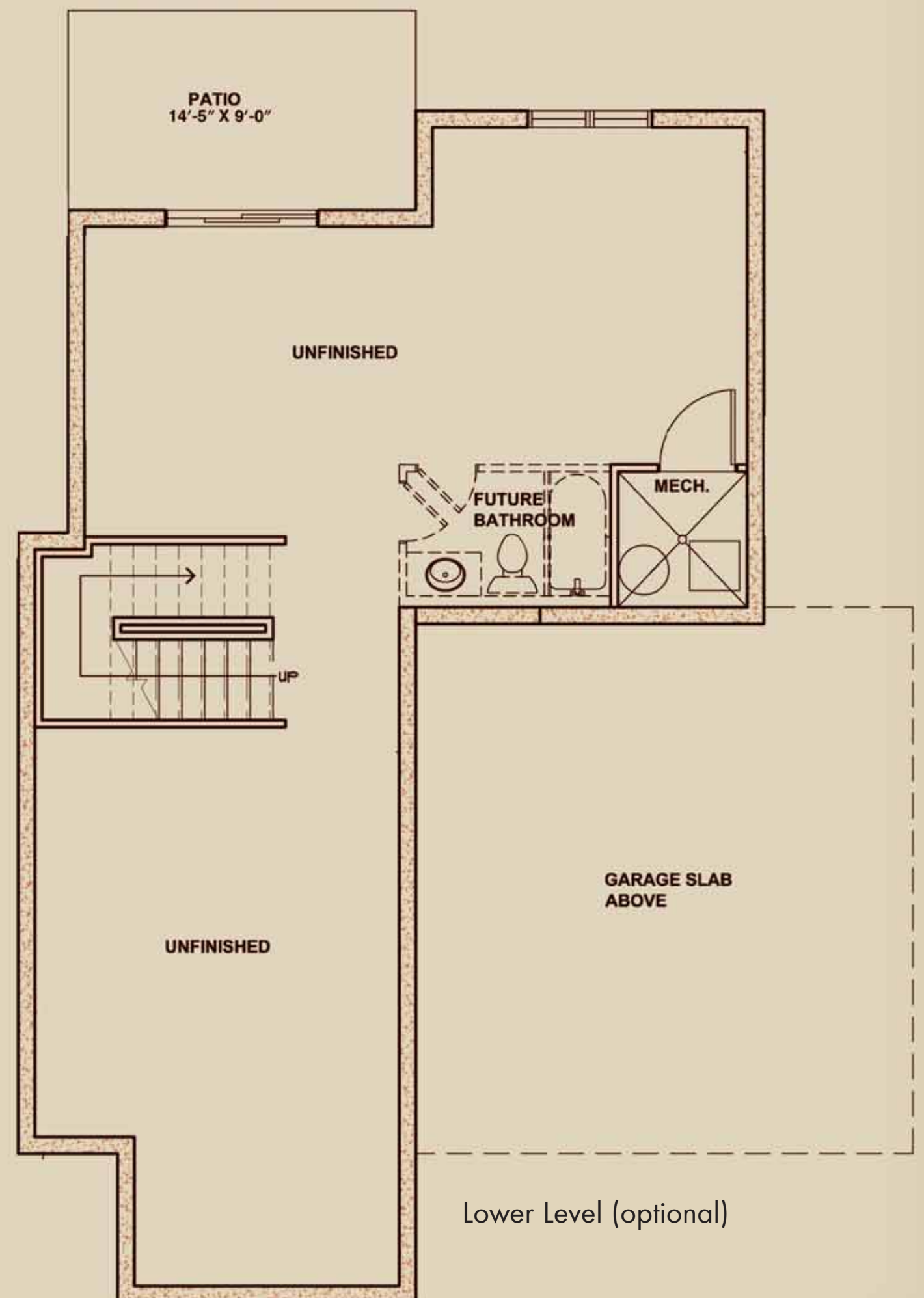


Upper Level



JAMES

5 Homes Available - (SF-1B)

Single Family: 3 bedroom / 2.5 bath

Lower 943 sq. ft. unfinished (optional)

Main 970 sq. ft. finished

452 sq. ft. garage

Upper 783 sq. ft. finished

Total: 3148 sq.ft. / 1753 finished sq.ft.